



Item No: 10a_supp
Date of Meeting: February 8, 2022

EAST MARGINAL WAY CORRIDOR IMPROVEMENT PROJECT MEMORANDUM OF UNDERSTANDING

Presenters:
Geraldine Poor, Senior Manager, Regional Transportation, Port of Seattle
Lindsay Wolpa, Senior Manager, Strategic Projects, Northwest Seaport Alliance



Project Authorization

East Marginal Way Corridor Improvement Project Memorandum of Understanding

Request authorization for the Executive Director to execute:

A Memorandum of Understanding (MOU), in substantially the form attached, for \$5.5 million in partnership with the City of Seattle on the East Marginal Way Corridor Improvement Project.



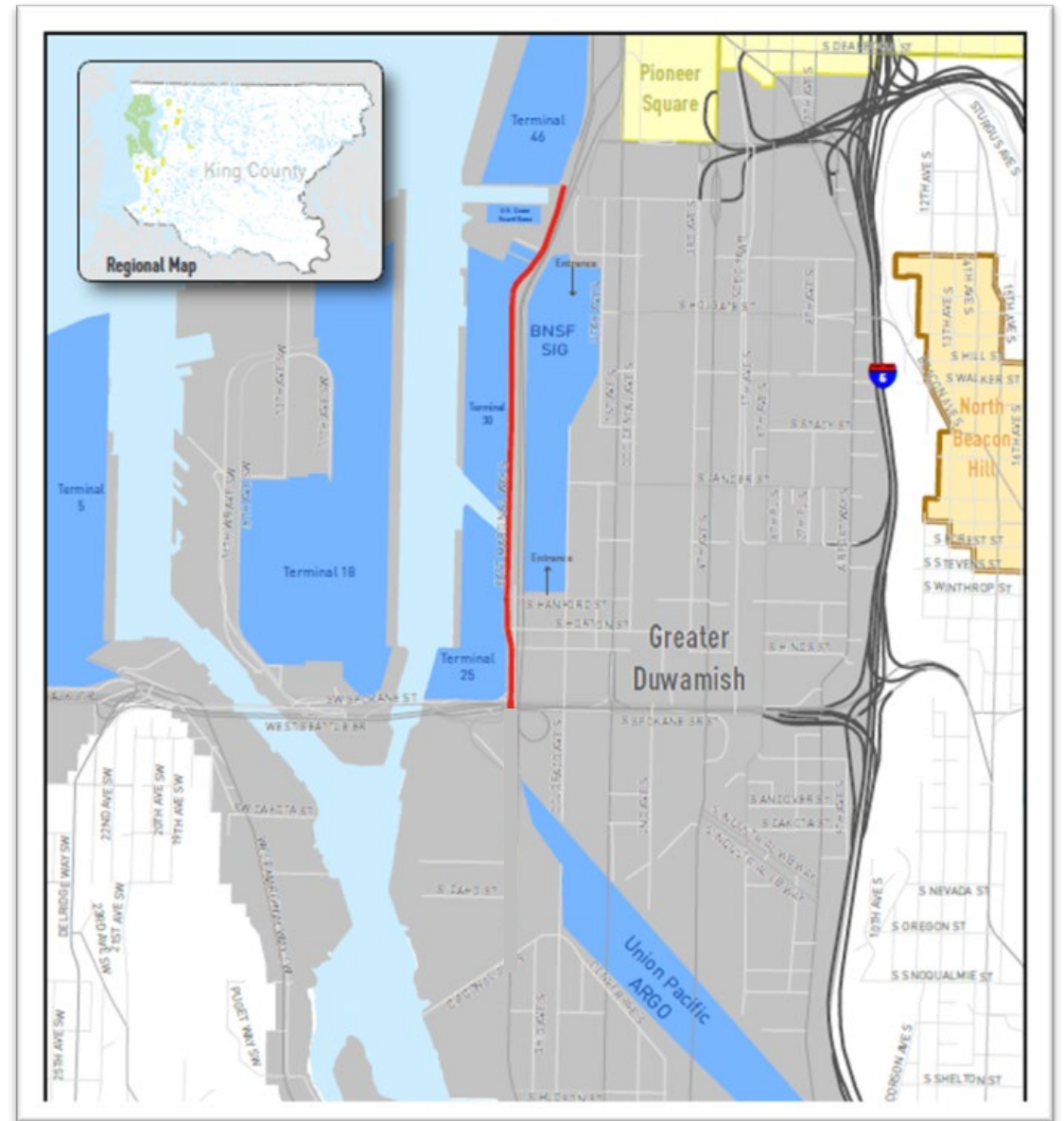
East Marginal Way in the Heavy Haul Corridor

- In 2015, the Port and City entered into the Heavy Haul Memorandum of Understanding (MOU)
- The Heavy Haul MOU committed the Port to fund \$10M-\$20M through 2035 for future roadway repair
- The funding level comes from a study (updated every 5 years) identifying road impacts of Heavy Haul permitted trucks
- The 2019 study set this funding at \$10,154,000
- A schedule of the City's planned projects assigns the funding, and East Marginal Way is the first
- This analysis is included as Exhibit E to the EMW MOU



Project location

- Located in Seattle's Greater Duwamish Manufacturing and Industrial Center
- Serves North Harbor Terminals 5, 18, 25, 30, and 46, and the U.S. Coast Guard
- Key regional arterial for access to international commerce, I-5, I-90, SR 509
- Federal "Critical Urban Freight Corridor"
- State freight route (T-1/T-2)
- Primary access to BNSF and UPRR intermodal yards





T-46

USCG

BNSF SIG

Project Corridor

T-30

SODO MIC

T-18

UP Argo

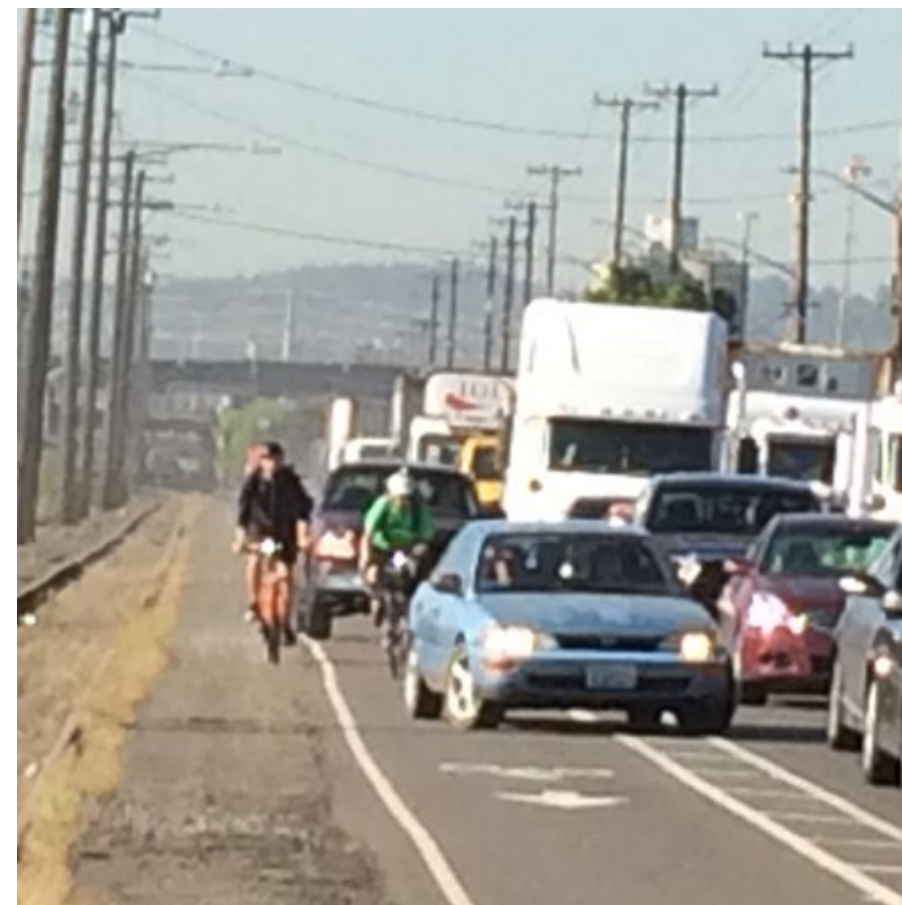
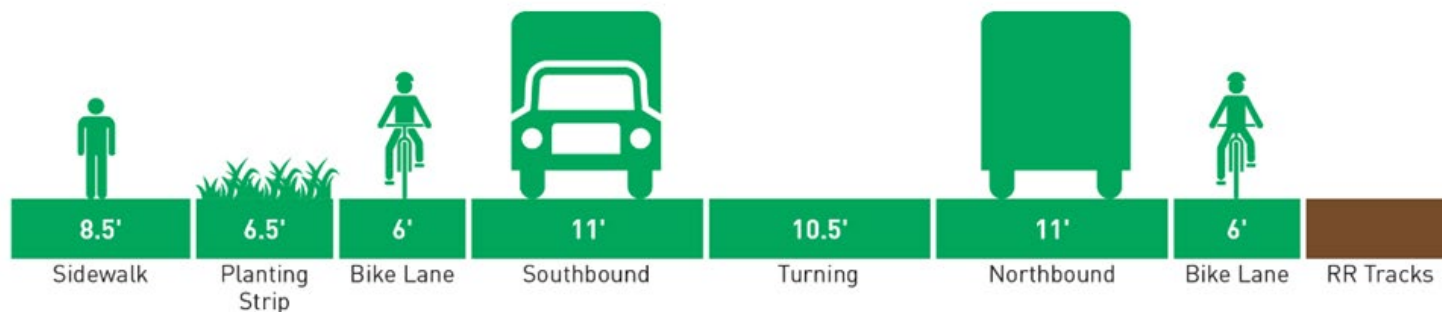
T-5

East Marginal Way



Existing Conditions

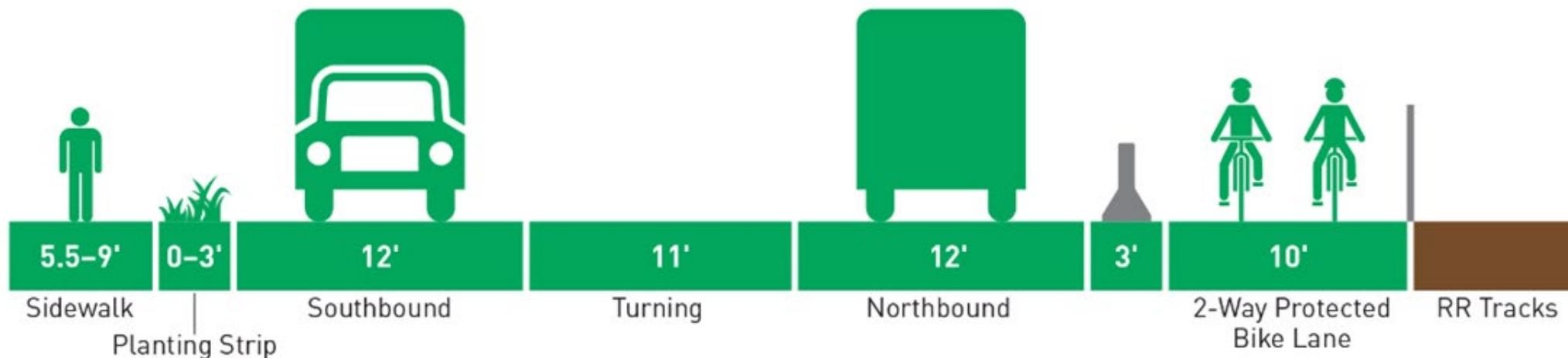
- No separation between roadway, bicycle lanes and railroad tracks
- Roadway in poor condition
- Safety concerns along the roadway and at intersections



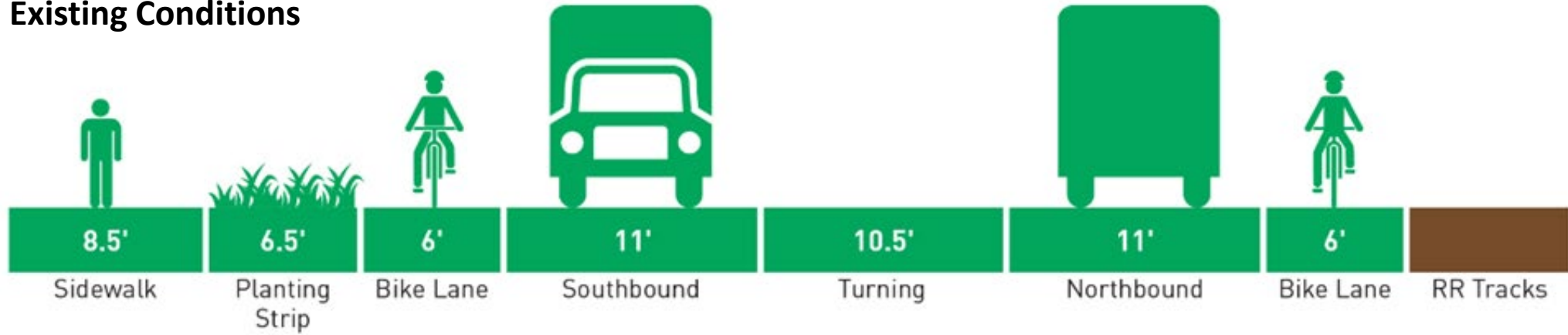
Corridor Safety Improvements

Adds fully separated bicycle facilities

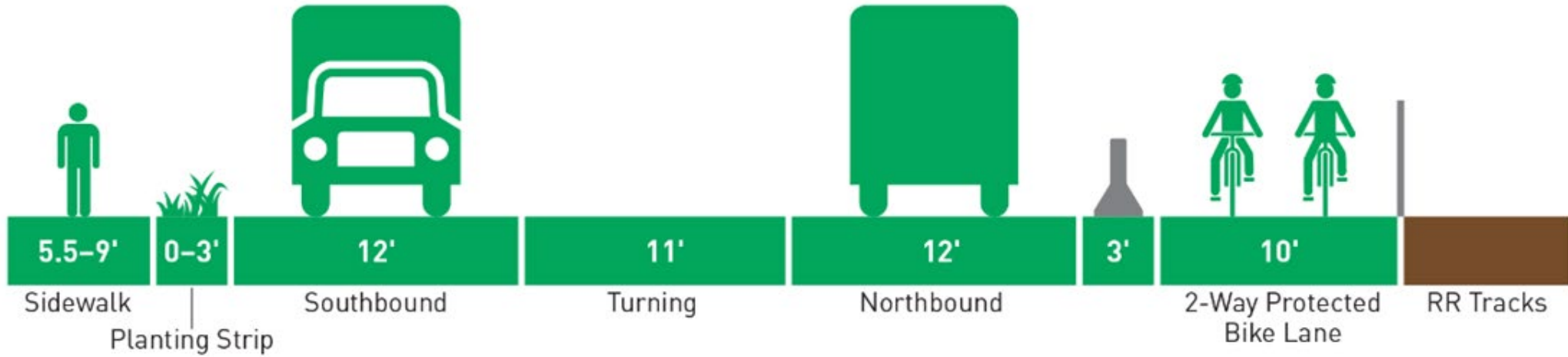
- Minimizes conflict points
- Adds concrete barrier between road and bicycle lanes
- Adds fencing between bicycle lanes and railroad tracks
- Keeps bicyclists away from driveways



Existing Conditions

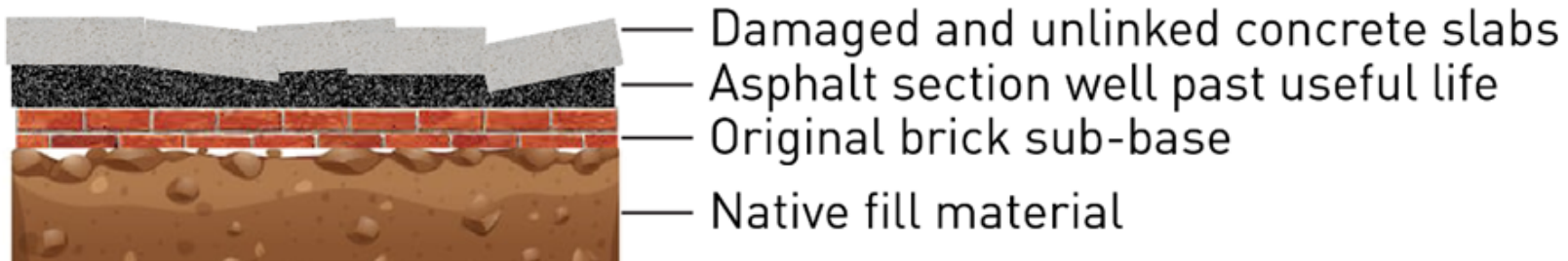


Corridor Safety Improvements



Heavy Haul Pavement Network

- Pavement between Massachusetts St and Spokane St will be upgraded to Heavy Haul standards
(15-inch-thick concrete over 6-inch aggregate)
- Reconstructs roadway to provide 50-year life
- Redesigns intersections and adds adaptive signals to improve traffic flow



Freight Mobility components

Key Freight Mobility work:

- Heavy Haul pavement standards
- Rebuilt intersection, traffic signal and potential railroad crossing relocation at S Hanford St, improving signal operations and safety
- Terminal 25 driveway redesign
- S Spokane St truck apron at NE corner



Source of Funds

East Marginal Way Corridor Improvement Project Memorandum of Understanding

- **SDOT's construction phase estimate for the transportation elements of the North segment is \$38,130,000**
- **The Port's contribution will be \$5,500,000**
 - To be made in three payments of:
 - \$2,200,000 at 50% progress
 - \$2,200,000 at Substantial Completion and
 - \$1,100,000 at Final Acceptance
 - Note: This supersedes HHA maximum payment of \$2,000,000 per year
 - Included in the \$20 million Heavy Haul agreement with funds reserved in the Port's Transportation and Infrastructure Fund

Partner Investments

East Marginal Way Corridor Improvement Project Memorandum of Understanding

	Funding Source	Total Funding Amount*	Percent
Federal Funds	RAISE Grant Funds	\$20,000,000	58%
	FHWA	\$2,000,000	
	Total Federal Funds	\$22,000,000	
Non-Federal Funds	City of Seattle	\$3,000,000	42%
	State Grants	\$7,630,000	
	Port of Seattle	\$5,500,000	
	Total Non-Federal Funds	\$16,130,000	
Total Project Funding	(Eligible RAISE costs only)	\$38,130,000	100%

*Total Funding Amount for construction of North segment transportation components



Conclusion: Authorization

East Marginal Way Corridor Improvement Project
Memorandum of Understanding

**Request authorization for the Executive
Director to execute a:**

Memorandum of Understanding (MOU), in substantially the form attached, for \$5.5 million in partnership with City of Seattle on the East Marginal Way Corridor Improvement Project.